



ENABLING THE TRANSFORM MENU IN BSL ANALYSIS (RSD)

Unlike the full version of **Biopac Student Lab** software, the **BSL Analysis** version used by many students outside the lab does not directly support the opening of Lesson and sample data files in *BSL PRO* mode. *BSL PRO* mode enables access to the Transform menu and other features helpful for enhanced analysis.

Biopac Student Lab - SampleData-L02

File Edit **Transform** Display Window Help

Recently Used

Digital Filters

Math Functions

Template Functions

Integral

Derivative...

Integrate...

Smoothing...

Difference...

Resample Waveform...

Resample Graph...

Expression...

Delay...

Rescale...

Waveform Math...

Slew Rate Limiter...

Journal

Lesson 2 - Electromyography (EMG) II
 File name: SampleData-L02
 Monday, January 26, 2004
 04:38:58 PM

First procedure, Forearm 1 (dominant):
 Increase clenches in increments of 5 Kg until maximum clench force is obtained.

Second procedure, Forearm 1 (dominant):
 Continued maximal clench until fatigue causes 50% reduction in measured force.

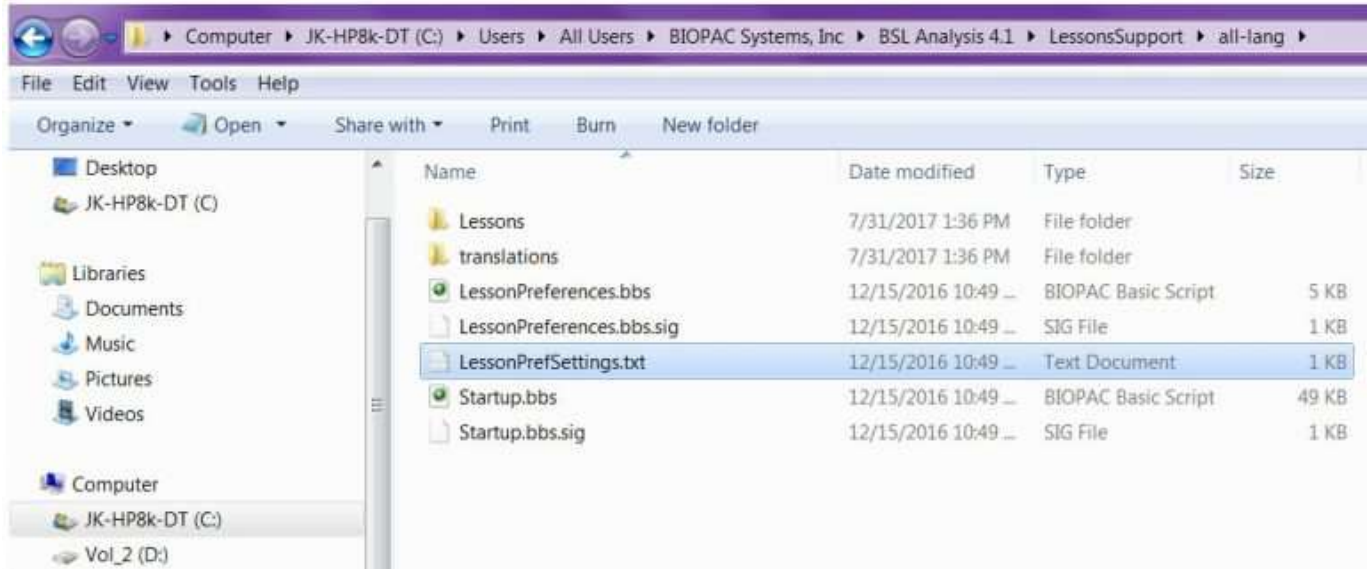
The following steps describe how to edit the LessonPrefSettings.txt file to enable the **Transform** menu in **BSL Analysis** version 4.0.1 or above.

1. Locate the **LessonPrefSettings.txt** file, typically in the LessonsSupport folder in the Program Data directory:

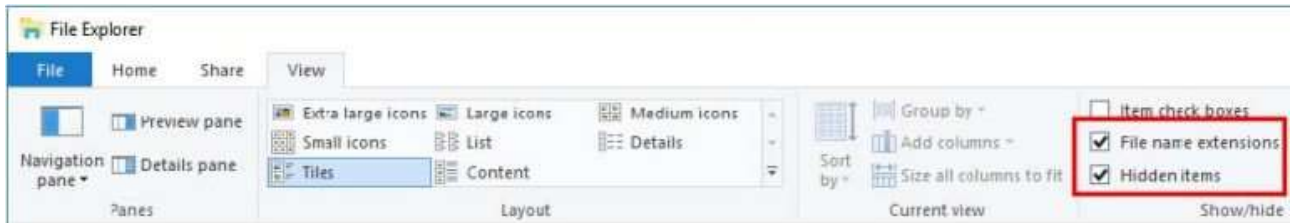
Windows: <Main Drive>:\ProgramData\BIOPAC Systems, Inc\BSL Analysis

4.X\LessonsSupport\all-lang\

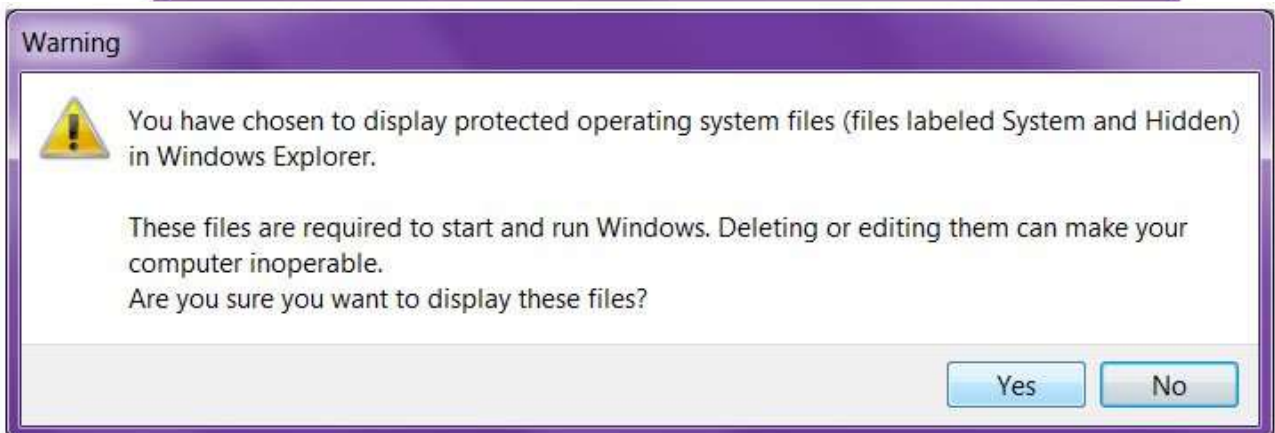
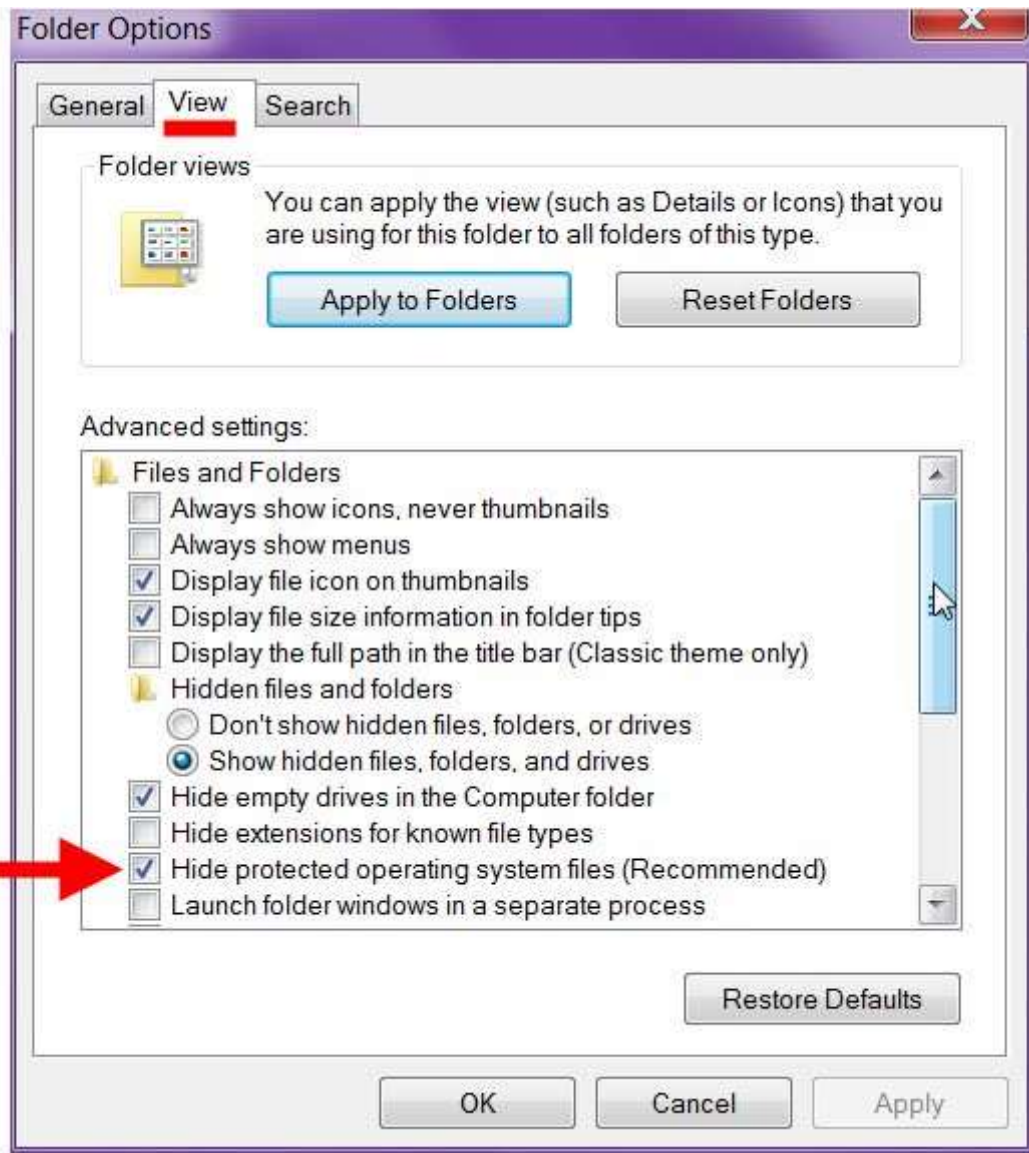
Mac: Finder\Applications\BSL Analysis 4.x.app – highlight “BSL Analysis 4.x” and choose “Show Package Contents.”



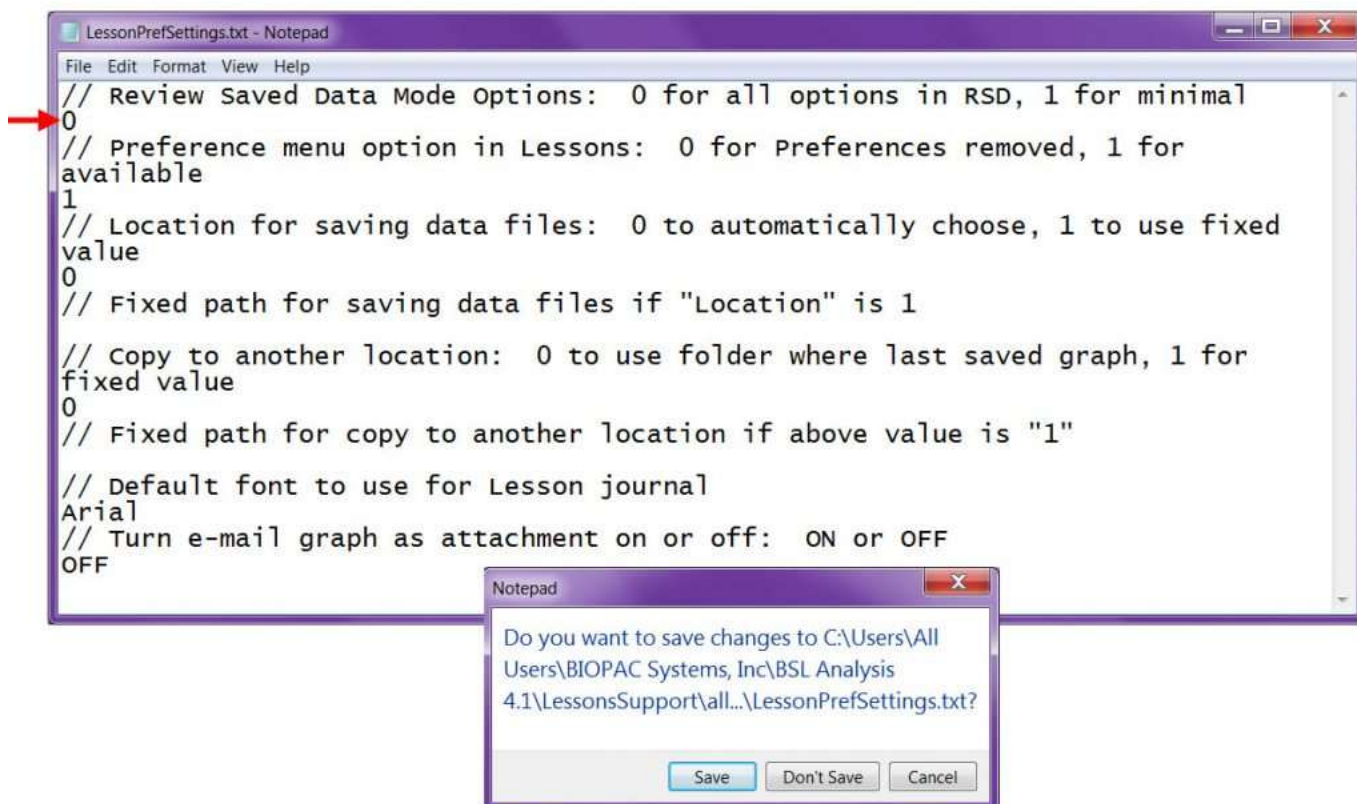
- The **LessonsSupport** folder may be hidden on some Windows systems. If the LessonsSupport folder is not found in the Program Data directory, try the following steps to show the hidden folder:
 - Windows 10 users: click the “File” menu, and enable the “File name extensions” and “Hidden items” checkboxes.



- Windows 8 and 7 users: select “Tools > Folder options...” and click the View tab, then enable the option “Show hidden files, folders, and drives” and click OK; click Yes if prompted .



2. Double-click the **LessonPrefSettings.txt** file to open it in Notepad (or any text editor).
NOTE: Administrator privileges are required to edit this file.
3. Change the “**Review Saved Data Mode Options**” value from “1” to “0.”



4. Close the file and choose "Save" to accept the changes.
5. The next time **BSL Analysis** is launched and a file opened, the **Transform** menu will be available.

[Click here for print-friendly BSL Analysis Transform menu \(pdf\) instructions.](#)
